

6 Barn Owl Court, Boambee East

SOLD BY KENDALL DEVINE 0437 775 485

Start packing those boxes, this is the one you've been waiting for! Whether you're looking to downsize & simplify your life, or you're searching for your new family home ...either way, this could be the perfect home for you! Well presented inside & out this home is located in a quiet cul-de-sac within popular Boambee East. **For more information please visit our website.**

Disclaimer: In preparing this brochure, Nolan Partners and it's related franchisees has relied in good faith upon information provided by others and has made all reasonable efforts to ensure that the information is correct. The accuracy of the information provided to you (whether written or verbal) cannot be guaranteed. If you are considering this property, you must make all enquiries necessary to satisfy yourself that all information is accurate.

BED
3

BATH
3

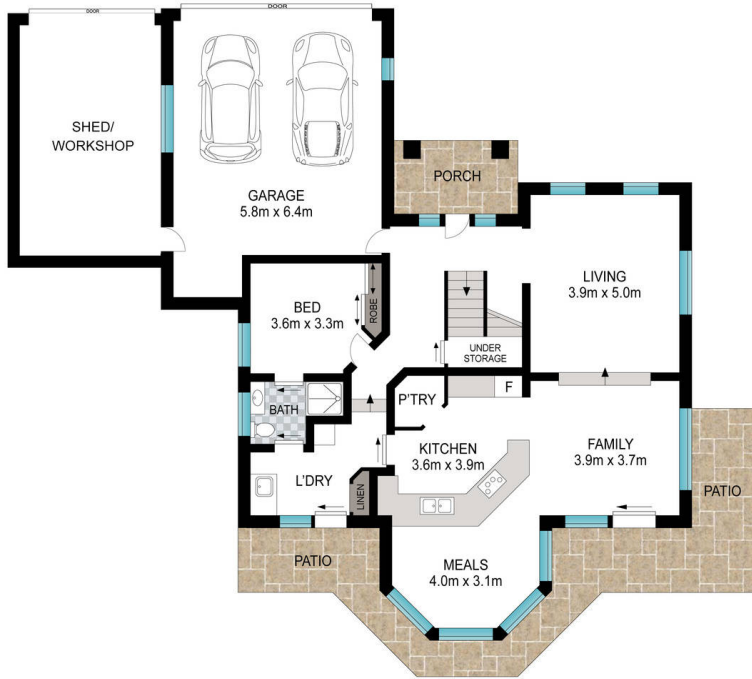
CAR
3

SOLD

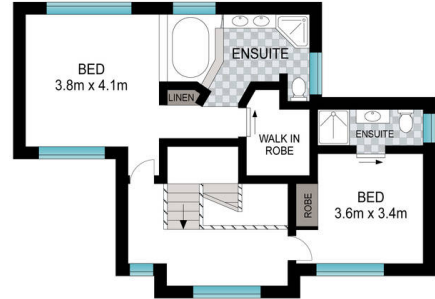
Sold for \$1,100,000



Kendall Devine - 0437 775 485
kendall@nolanpartners.com.au



GROUND FLOOR



FIRST FLOOR



Scale in metres. Indicative only. Dimensions are approximate. All information contained herein is gathered from sources we believe to be reliable. However, we cannot guarantee its accuracy and interested persons should rely on their own enquiries.

INT: 210 m²
EXT: 30 m²

6 Barn Owl Court, Boambee East